

BALDOR • RELIANCE

Customer information packet

34G50-883

.75HP, 1725RPM, 3PH, 60HZ, 56CZ, 3420M, TEFC, F
Continental Pump

Specifications

| | |
|--------------------------------|--|
| Enclosure | TEFC |
| Frame | 56CZ |
| Frame Material | Steel |
| Frequency | 60.00 Hz |
| Haz Area Class and Group | None |
| Haz Area Division | Not Applicable |
| Motor Letter Type | Three Phase |
| Output @ Frequency | .750 HP @ 60 HZ |
| Phase | 3 |
| Synchronous Speed @ Frequency | 1800 RPM @ 60 HZ |
| Voltage @ Frequency | 208.0 V @ 60 HZ 230.0 V @ 60 HZ 460.0 V @ 60 HZ |
| Agency Approvals | CSA UR |
| Ambient Temperature | 40 °C |
| Auxillary Box | No Auxillary Box |
| Auxillary Box Lead Termination | None |
| Base Indicator | Rigid |
| Bearing Grease Type | Polyrex EM (-20F +300F) |
| Blower | None |
| Current @ Voltage | 3.600 A @ 208.0 V 3.200 A @ 208.0 V 3.000 A @ 230.0 V 1.500 A @ 460.0 V |
| Design Code | B |
| Drip Cover | No Drip Cover |
| Duty Rating | CONT |
| Efficiency @ 100% Load | 75.5 % |
| Electrically Isolated Bearing | Not Electrically Isolated |
| Feedback Device | NO FEEDBACK |
| Front Face Code | Standard |

Part detail

| | |
|--------------|------------|
| Revision | U |
| Type | AC |
| Mech. spec. | 34G050 |
| Base | |
| Status | PRD/A |
| Elec. spec. | 34WG0883 |
| Layout | 34LYG050 |
| Eff. date | 10-25-2024 |
| CD Diagram | CD0005 |
| Poles | 04 |
| Leads | 9#18 |
| Proprietary | True |
| Created date | 01-01-0001 |

| | |
|-------------------------------|---------------------|
| Front Shaft Indicator | None |
| Heater Indicator | No Heater |
| High Voltage Full Load Amps | 1.5 a |
| Insulation Class | B |
| Inverter Code | Not Inverter |
| KVA Code | K |
| Lifting Lugs | No Lifting Lugs |
| Locked Bearing Indicator | Locked Bearing |
| Motor Lead Exit | Ko Box |
| Motor Lead Quantity/Wire Size | 9 @ 18 AWG |
| Motor Lead Termination | Flying Leads |
| Motor Standards | NEMA |
| Motor Type | 3420M |
| Mounting Arrangement | F1 |
| Number of Poles | 4 |
| Overall Length | 11.35 IN |
| Power Factor | 60 |
| Product Family | General Purpose |
| Pulley End Bearing Type | Ball |
| Pulley Face Code | C-Face |
| Pulley Shaft Indicator | Special Combination |
| Rodent Screen | None |
| Service Factor | 1.25 |
| Shaft Diameter | 0.625 IN |
| Shaft Extension Location | Pulley End |
| Shaft Ground Indicator | No Shaft Grounding |
| Shaft Rotation | Reversible |
| Shaft Slinger Indicator | No Slinger |
| Speed | 1725 rpm |
| Speed Code | Single Speed |
| Starting Method | Direct on line |
| Thermal Device - Bearing | None |
| Thermal Device - Winding | None |
| Vibration Sensor Indicator | No Vibration Sensor |

Winding Thermal 1

None

Winding Thermal 2

None

Nameplate

| NP1256L | | | | | | | | | |
|---------------------|-----------------|-------------|-----------|------------|---|--------------|---|--|--|
| CAT.NO. | | | | | | | | | |
| SPEC. | 34G50-883 | | | | | | | | |
| HP | .75 | | | | | | | | |
| VOLTS | 208-230/460 | | | | | | | | |
| AMP | 3.2-3/1.5 | | | | | | | | |
| RPM | 1725 | | | | | | | | |
| FRAME | 56CZ | | HZ | 60 | | PH | 3 | | |
| SER.F. | 1.25 | CODE | K | DES | B | CLASS | B | | |
| NEMA-NOM-EFF | 75.5 | PF | 60 | | | | | | |
| RATING | 40C AMB-CONT | | | | | | | | |
| CC | | | | | | | | | |
| DE | 6203 | ODE | 6203 | | | | | | |
| ENCL | TEFC | SN | | | | | | | |
| | SFA 3.6-3.4/1.7 | | | | | | | | |

Parts list

| Part number | Description | Quantity |
|---------------|--|----------|
| SA005924 | SA 34G50-883 | 1.000 ea |
| RA002670 | RA 34G50-883 | 1.000 ea |
| NS2512A01 | INSULATOR, CONDUIT BOX X | 1.000 ea |
| 34CB3002A | CB CAST W/.88 DIA HOLE | 1.000 ea |
| 34GS1029A01 | GASKET, CONDUIT BOX | 1.000 ea |
| 51XB1016A07 | 10-16 X 7/16 HXWSSLD SERTYB | 2.000 ea |
| 11XW1032G06 | 10-32 X .38, TAPTITE II, HEX WSHR SLTD U | 1.000 ea |
| 34EP3102A01SP | FR ENDPLATE, MACH | 1.000 ea |
| HW5100A03 | WAVY WASHER (W1543-017) | 1.000 ea |
| 34EP3300A49 | PU ENDPLATE, MACH. W/SPL. HOLES FOR CUST | 1.000 ea |
| 51XN1032A20 | 10-32 X 1 1/4 HX WS SL SR | 2.000 ea |
| 34FN3002A01SP | EXTERNAL FAN, PLASTIC, .637/.639 HUB W/ | 1.000 ea |
| 34FH4002A01SP | IEC FH NO GREASER PRIMED | 1.000 ea |
| 51XW1032A06 | 10-32 X .38, TAPTITE II, HEX WSHR SLTD S | 3.000 ea |
| HW4600A09 | SEAL 0.656 X 1.124 X 0.250 DOUBLE SHIELD | 1.000 ea |
| 34CB4517 | CB LID 4 MTG HOLES .22 DIA STAMPED, FOR | 1.000 ea |
| 34GS1031A01 | GASKET, FLAT CONDUIT BOX LID (LEXIDE) | 1.000 ea |
| 51XW0832A07 | 8-32 X .44, TAPTITE II, HEX WSHR SLTD SE | 4.000 ea |
| MJ5001A27 | 32220KN GRAY SEALER *MIN BUY 4 QTS=1GAL | 0.001 qt |
| MG1050G01 | CELEROL MEDIUM CHARCOAL METALLIC GRAY | 0.014 ga |
| 85XU0407S04 | 4X1/4 U DRIVE PIN STAINLESS | 2.000 ea |
| 85XU0407S04 | 4X1/4 U DRIVE PIN STAINLESS | 2.000 ea |
| HA3100A12 | THRUBOLT 10-32 X 7.375 | 4.000 ea |
| MN416A01 | TAG-INSTAL-MAINT no wire (2500bx)4/22 | 1.000 ea |
| LC0005E01 | CONN.DIA./WARNING LABEL (LC0005/LB1119N) | 1.000 ea |
| NP1256L | ALUM UL CC INDUSTRIAL MOTOR A60 | 1.000 ea |
| 35PA1066 | PKG GRP, PRINT PK1008A06 | 1.000 ea |
| LB1417 | LABEL CARTON 6X4 PERFORATED BLANK ROLLS | 1.000 ea |

AC Induction Motor Performance Data

Record # 6605

Typical performance - not guaranteed values

| Winding: 34WG0883-R001 | | Type: 3420M | Enclosure: TEFC | | |
|------------------------|-------------|---------------------------|--|-----------------------|--------|
| Nameplate Data | | | 460 V, 60 Hz: High Voltage Connection | | |
| Rated Output (HP) | .75 | Full Load Torque | 2.25 LB-FT | | |
| Volts | 208-230/460 | Start Configuration | direct on line | | |
| Full Load Amps | 3.2-3/1.5 | Breakdown Torque | 10 LB-FT | | |
| R.P.M. | 1725 | Pull-up Torque | 8.5 LB-FT | | |
| Hz | 60 Phase | 3 | Locked-rotor Torque | 8.8 LB-FT | |
| NEMA Design Code | B | KVA Code | K | Starting Current | 10 A |
| Service Factor (S.F.) | 1.25 | No-load Current | 1.2 A | | |
| NEMA Nom. Eff. | 75.5 | Power Factor | 60 | Line-line Res. @ 25°C | 18.3 Ω |
| Rating - Duty | 40C | AMB-CONT | Temp. Rise @ Rated Load | 74°C | |
| S.F. Amps | 3.6-3.4/1.7 | Temp. Rise @ S.F. Load | 87°C | | |
| | | Locked-rotor Power Factor | 57.5 | | |
| | | Rotor inertia | 0.0476 LB-FT ² | | |

Load Characteristics 460 V, 60 Hz, 0.75 HP

| % of Rated Load | 25 | 50 | 75 | 100 | 125 | 150 | S.F. |
|-----------------|------|------|------|------|------|------|------|
| Power Factor | 27 | 42 | 54 | 61 | 70 | 75 | 71 |
| Efficiency | 56.1 | 70 | 74.8 | 76.2 | 76 | 75.3 | 76.1 |
| Speed | 1783 | 1766 | 1749 | 1731 | 1711 | 1693 | 1711 |
| Line amperes | 1.2 | 1.2 | 1.3 | 1.5 | 1.6 | 1.8 | 1.6 |

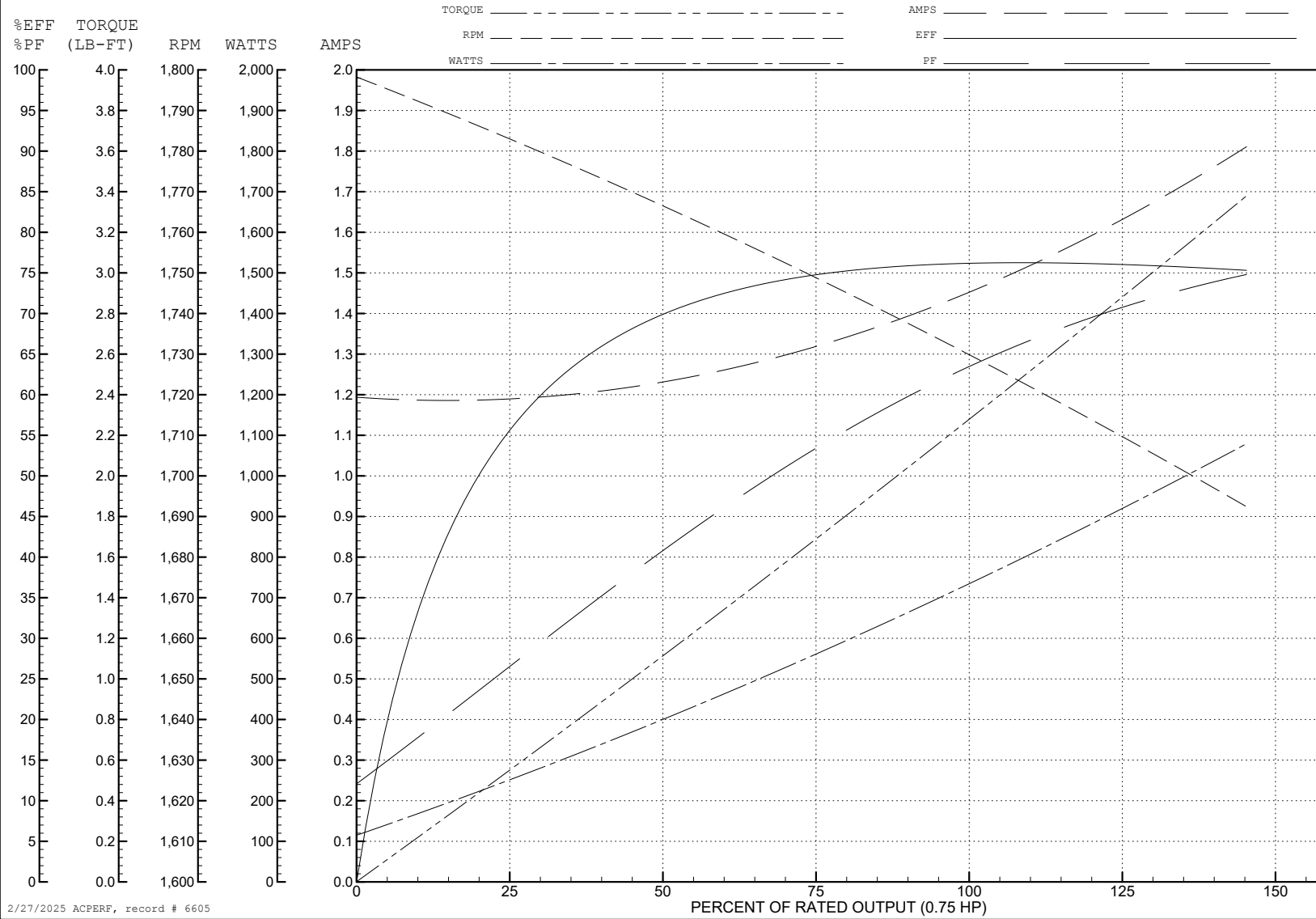
ABB Motors and Mechanical Inc.

WINDING # 34WG0883

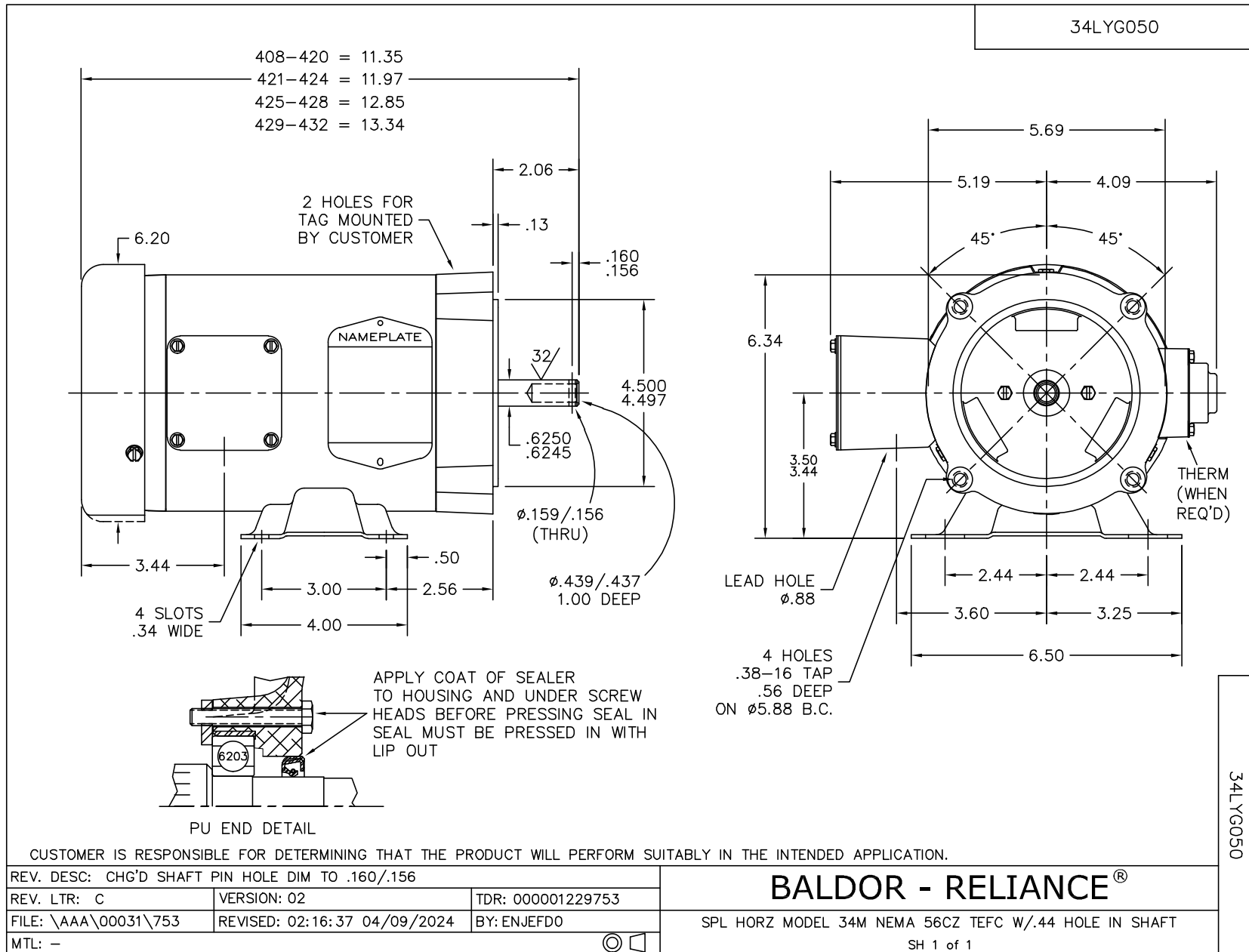
0.75 HP 3 PH 60 HZ 1725 RPM 460 V 3420M

Typical performance - not guaranteed values.

TORQUES (LB-FT): PO=10 PU=8.5 LR=8.8 LRA=10



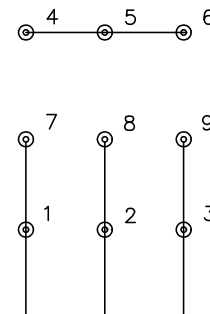
2/27/2025 ACPERF, record # 6605



CD0005

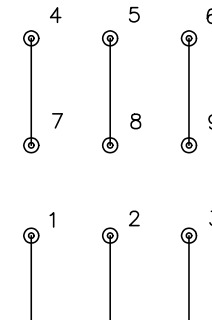


LOW VOLTAGE
(2Y)



LINE

HIGH VOLTAGE
(1Y)



LINE

NOTES:

1. INTERCHANGE ANY TWO LINE LEADS TO REVERSE ROTATION.
2. OPTIONAL THERMOSTATS ARE PROVIDED WHEN SPECIFIED.
3. ACTUAL NUMBER OF INTERNAL PARALLEL CIRCUITS MAY BE A MULTIPLE OF THOSE SHOWN ABOVE.
4. LEAD COLORS ARE OPTIONAL. LEADS MUST ALWAYS BE NUMBERED AS SHOWN.

| | | | |
|---|---------|-------------------------|--------------|
| REV. DESC: REVISE TO SHOW OPTIONAL COLORS | | | |
| REV. LTR: E | BY: JLP | REVISED: 01/19/99 10:15 | TDR: 0171435 |
| S00000 | | FILE: AAA00005140 | MDL: - |
| | | MTL: - | |

BALDOR ELECTRIC Co.

3PH, DV, 9 LEADS

CD0005