



Customer information packet

35W420Z801G1

1.5HP, 1755RPM, 3PH, 60HZ, 56CZ, 3528M, TEFC, F

Class - None

Division - Not Applicable

Specifications

Enclosure	TEFC
Frame	56CZ
Frame Material	Steel
Frequency	60.00 Hz
Haz Area Class and Group	None
Haz Area Division	Not Applicable
Motor Letter Type	Three Phase
Output @ Frequency	1.500 HP @ 60 HZ
Phase	3
Synchronous Speed @ Frequency	1800 RPM @ 60 HZ
Voltage @ Frequency	230.0 V @ 60 HZ 208.0 V @ 60 HZ 460.0 V @ 60 HZ
Agency Approvals	NEMA PREMIUM NEMA_PREMIUM UR CSA EEV
Ambient Temperature	40 °C
Auxillary Box	No Auxillary Box
Auxillary Box Lead Termination	None
Base Indicator	Rigid
Bearing Grease Type	Polyrex EM (-20F +300F)
Blower	None
Current @ Voltage	4.500 A @ 230.0 V 4.400 A @ 208.0 V 2.250 A @ 460.0 V
Design Code	B
Drip Cover	No Drip Cover
Duty Rating	CONT
Efficiency @ 100% Load	86.5 %
Electrically Isolated Bearing	Not Electrically Isolated
Feedback Device	NO FEEDBACK

Part detail

Revision	H
Type	AC
Mech. spec.	35W420
Base	
Status	PRD/A
Elec. spec.	35WGZ801
Layout	35LYW420
Eff. date	10-15-2024
CD Diagram	CD0005
Poles	04
Leads	9#18
Proprietary	False
Created date	01-10-2022

Front Shaft Indicator	None
Heater Indicator	No Heater
High Voltage Full Load Amps	2.3 a
Insulation Class	F
Inverter Code	Inverter Ready
KVA Code	L
Lifting Lugs	No Lifting Lugs
Locked Bearing Indicator	Locked Bearing
Motor Lead Quantity/Wire Size	9 @ 18 AWG
Motor Lead Termination	Flying Leads
Motor Standards	NEMA
Motor Type	3526M
Mounting Arrangement	F1
Number of Poles	4
Overall Length	13.31 IN
Power Factor	73
Product Family	General Purpose
Pulley End Bearing Type	Ball
Pulley Face Code	C-Face
Pulley Shaft Indicator	Special Combination
Rodent Screen	None
Service Factor	1.15
Shaft Diameter	0.750 IN
Shaft Ground Indicator	No Shaft Grounding
Shaft Rotation	Reversible
Shaft Slinger Indicator	No Slinger
Speed	1755 rpm
Speed Code	Single Speed
Starting Method	Direct on line
Thermal Device - Bearing	None
Thermal Device - Winding	None
Vibration Sensor Indicator	No Vibration Sensor
Winding Thermal 1	None
Winding Thermal 2	None

Nameplate

NP1259L									
CAT.NO.									
SPEC.	35W420Z801G1								
HP	1.5								
VOLTS	208-230/460								
AMP	4.4-4.5/2.25								
RPM	1755								
FRAME	56CZ		HZ	60		PH	3		
SER.F.	1.15	CODE	L	DES	B	CL	F		
NEMA-NOM-EFF	86.5	PF	73						
RATING	40C AMB-CONT								
CC	010A								
DE	6206		ODE	6203					
ENCL	TEFC	SN							
	SFA 5.1-5/2.5								

Parts list

Part number	Description	Quantity
SA401868	SA 35W420Z801G1	1.000 ea
RA393131	RA 35W420Z801G1	1.000 ea
34FN3002B01	EXTERNAL FAN, PLASTIC, .637/.639 HUB W/	1.000 ea
NS2512A01	INSULATOR, CONDUIT BOX X	1.000 ea
35CB3007	35 CB CASTING W/.88 DIA. LEAD HOLE	1.000 ea
36GS1000SP	GASKET-CONDUIT BOX, .06 THICK #SV-330 LE	1.000 ea
51XB1016A07	10-16 X 7/16 HXWSSLD SERTYB	2.000 ea
11XW1032G06	10-32 X .38, TAPTITE II, HEX WSHR SLTD U	1.000 ea
35EP3122K00	MASTER ODE,203 BRG,.683SH,#26 DRN,FH MTG	1.000 ea
HW5100A03	WAVY WASHER (W1543-017)	1.000 ea
35EP1301A85	PUEP ENCL 206 BRG SEAL W/NP MTG @ 12:00	1.000 ea
HW4600H12	SEAL 1.156 X 1.874 X 0.250 SINGLE LIP DB	1.000 ea
51XN1032A16	10-32 X 1.000 HX WS SL SR	2.000 ea
51XB1214A16	12-14X1.00 HXWSSLD SERTYB	1.000 ea
35FH4005A32SP	IEC FH NO GRSR W/3 HOLES - PRIMED	1.000 ea
51XW1032A06	10-32 X .38, TAPTITE II, HEX WSHR SLTD S	3.000 ea
35CB4521GX	CONDUIT BOX LID KIT **ORDER INDIV PARTS	1.000 ea
51XW0832A07	8-32 X .44, TAPTITE II, HEX WSHR SLTD SE	4.000 ea
MJ5001A27	32220KN GRAY SEALER *MIN BUY 4 QTS=1GAL	0.001 qt
85XU0407S04	4X1/4 U DRIVE PIN STAINLESS	4.000 ea
MJ1000A02	GREASE, POLYREX EM EXXON	0.050 lb
MG1050Y01	CELEROL BALDOR GOLD *** NLA IN 5 GALLON	0.017 ga
HA3100A15	THRUBOLT 10-32 X 8.375	4.000 ea
LB1624	COMBINED WARNING LABEL, ISO/ANSI PICTOGR	1.000 ea
LB1417	LABEL CARTON 6X4 PERFORATED BLANK ROLLS	1.000 ea
LC0005	CONN.DIA.,TY M,9-LD,DUAL VOLT,REVERSING	1.000 ea
NP1259L	ALUM SUPER-E UL CC NEMA PREMIUM A60	1.000 ea
36PA1000	PKG GRP, PRINT PK1016A06	1.000 ea
MN416A01	TAG-INSTAL-MAINT no wire (2500bx)4/22	1.000 ea
FE-0000001	ZRTG FE ASSEMBLY	1.000 ea

AC Induction Motor Performance Data

Record # 87010

Preliminary Data Sheet

Winding: 35WGZ801-R001		Type: 3528M		Enclosure: TEFC				
Nameplate Data			460 V, 60 Hz: High Voltage Connection					
Rated Output (HP)	1.5	Full Load Torque	4.51 LB-FT					
Volts	208-230/460	Start Configuration	direct on line					
Full Load Amps	4.4-4.5/2.25	Breakdown Torque	21.49 LB-FT					
R.P.M.	1755	Pull-up Torque	14.77 LB-FT					
Hz	60 Phase	3	Locked-rotor Torque	18.15 LB-FT				
NEMA Design Code	B	KVA Code	L	Starting Current	20.62 A			
Service Factor (S.F.)	1.15	No-load Current	1.45 A					
NEMA Nom. Eff.	86.5	Power Factor	73	Line-line Res. @ 25°C	9.85 Ω			
Rating - Duty	40C	AMB-CONT	Temp. Rise @ Rated Load			41°C		
S.F. Amps	5.1-5/2.5	Temp. Rise @ S.F. Load			48°C			
			Locked-rotor Power Factor			60.6		
			Rotor inertia			0.188 lb-ft ²		

Load Characteristics 460 V, 60 Hz, 1.5 HP

% of Rated Load	25	50	75	100	125	150	S.F.
Power Factor	32	50	63	72	78	82	76
Efficiency	75.2	84.1	86.3	86.7	86.2	85	86.4
Speed	1788	1777	1766	1754	1741	1727	1746
Line amperes	1.52	1.69	1.95	2.26	2.63	3.05	2.48

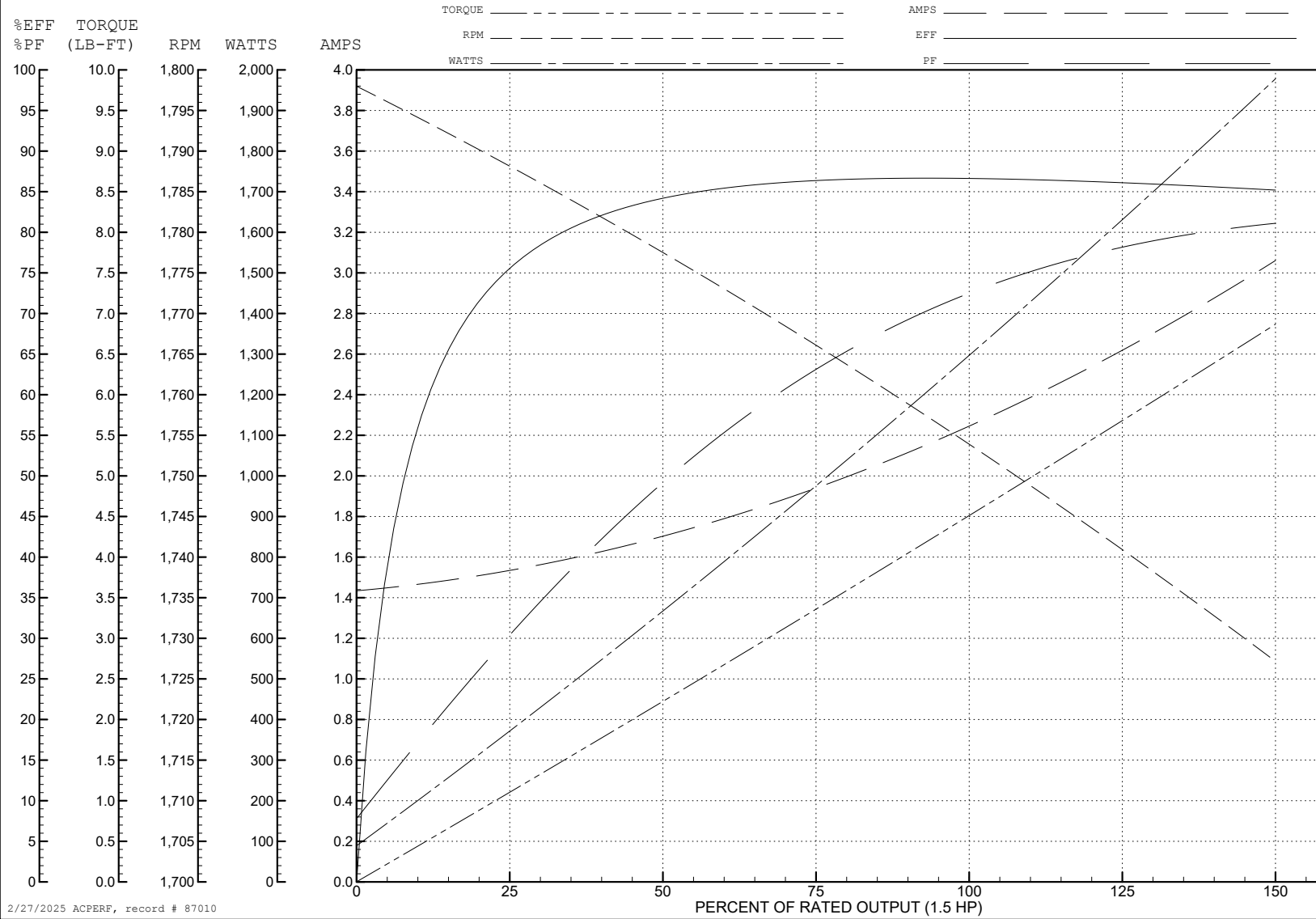
ABB Motors and Mechanical Inc.

WINDING # 35WGZ801

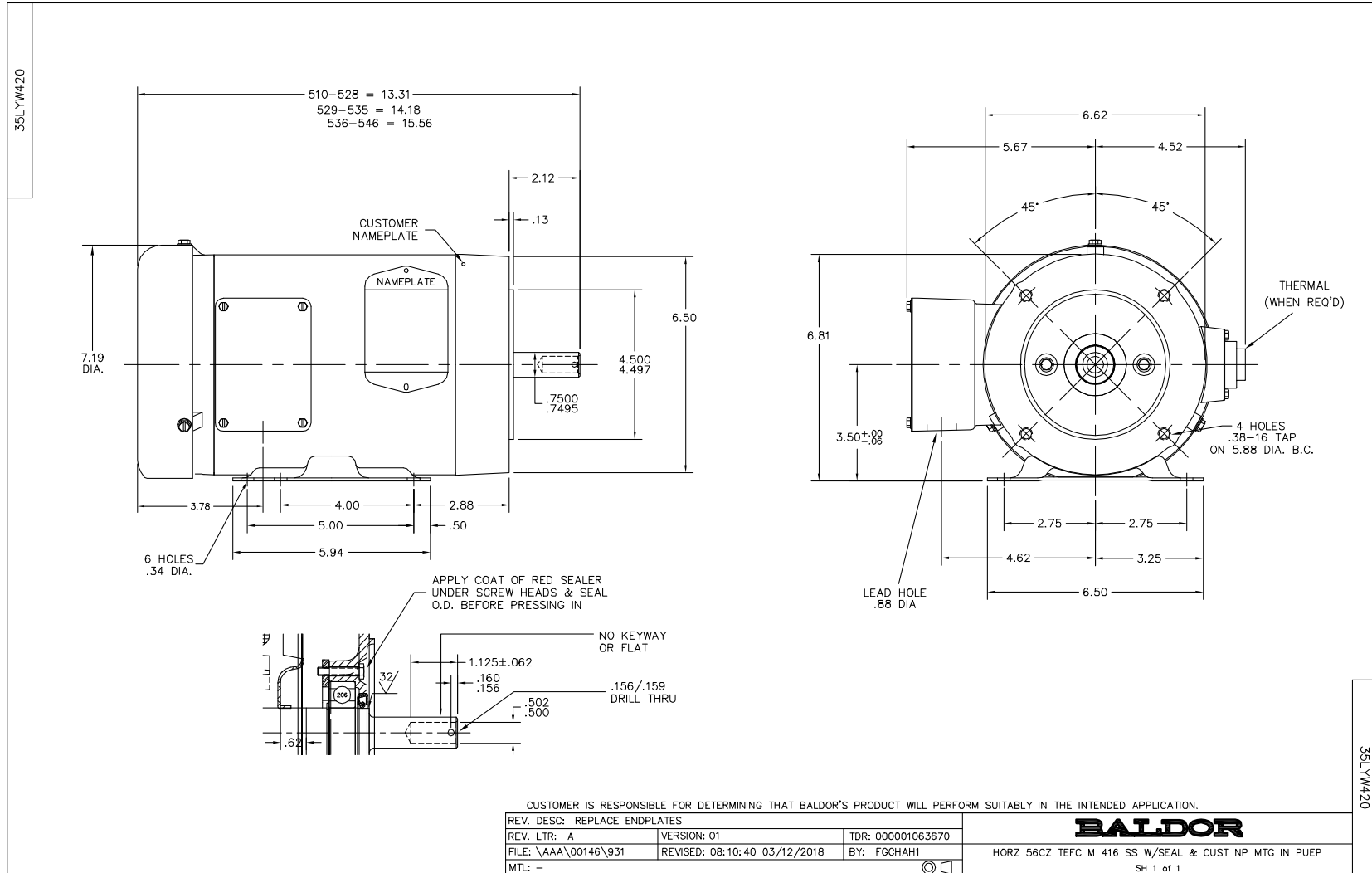
Typical performance - not guaranteed values.

1.5 HP 3 PH 60 HZ 1755 RPM 460 V 3528M

TORQUES (LB-FT): PO=21.49 PU=14.77 LR=18.15 LRA=20.62



2/27/2025 ACPERF, record # 87010



CD0005



LOW VOLTAGE
(2Y)



LINE

HIGH VOLTAGE
(1Y)



LINE

NOTES:

1. INTERCHANGE ANY TWO LINE LEADS TO REVERSE ROTATION.
2. OPTIONAL THERMOSTATS ARE PROVIDED WHEN SPECIFIED.
3. ACTUAL NUMBER OF INTERNAL PARALLEL CIRCUITS MAY BE A MULTIPLE OF THOSE SHOWN ABOVE.
4. LEAD COLORS ARE OPTIONAL. LEADS MUST ALWAYS BE NUMBERED AS SHOWN.

CD0005

REV. DESC: REVISE TO SHOW OPTIONAL COLORS			
REV. LTR: E	BY: JLP	REVISED: 01/19/99 10:15	TDR: 0171435
S00000		FILE: AAA00005140	MDL: -
		MTL: -	

BALDOR ELECTRIC Co.

3PH, DV, 9 LEADS

Marketing maintained PDF of MN416:

<http://www.baldor.com/support/Literature/Load.ashx/MN416?ManNumber=MN416>